

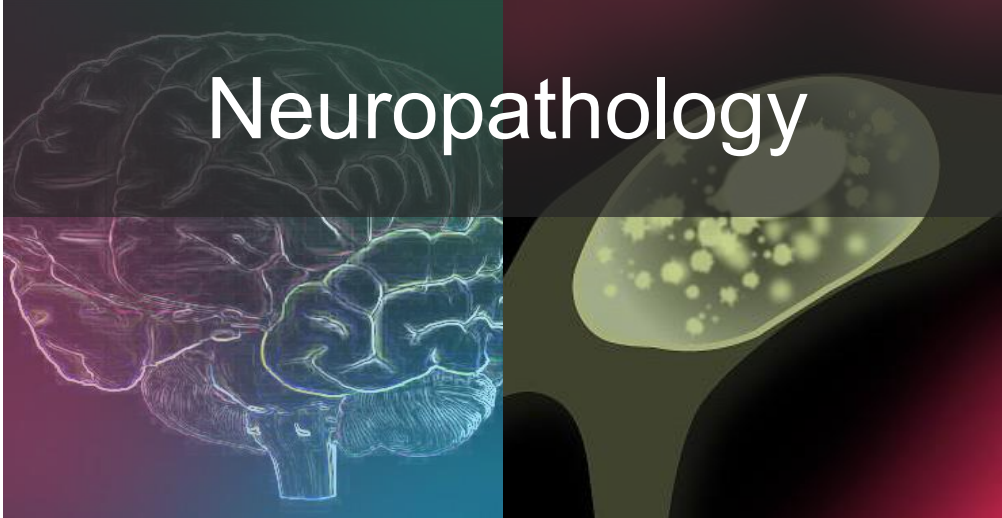


F E L L O W S H I P

Neuropathology



UPMC
LIFECHANGINGMEDICINE



Four ACGME Accredited Fellowship Positions (2022-2023)

10 reasons to train at UPMC for Neuropathology

1. State of the art facilities: Large academic center with multiple subspecialty based hospitals
2. Volume and diversity of cases:

Brain biopsies:	~700 intraoperative consultations	~2000 neurosurgical specimens
Autopsy:	~350 adult/child	~75 perinatal
Neuromuscular and neuro-ophthalmology:		~50 nerves, 200 muscles, 50 eyes
3. Intensive training in complex and challenging intraoperative consultations
4. World renowned teleneuropathology with global links
5. Flexible training plan, including neuroradiology training and extensive didactic / clinical conferences
6. Abundant research opportunities and options for clinical/anatomic or anatomic/research tracts
7. Extensive subspecialty expertise, including the Alzheimer's Disease Research Center, molecular diagnostics, proteomics/genomics and state-of-the art informatics
8. Complete virtual microscopy study set
9. Affordable, family friendly city with arts and cultural events, athletic events and outdoor activities
10. More benefits: vacation and conference time, dedicated funding for books and travel

University of Pittsburgh Medical Center
Division of Neuropathology
 UPMC Presbyterian – S701 Scaife Hall
 3550 Terrace Street
 Pittsburgh, PA 15261 USA



Julia Kofler, MD
 Fellowship Program Director
 412-624-9415
neuro.pathology.pitt.edu



F E L L O W S H I P

Neuropathology



P R O G R A M S P E C I F I C S

<i>Number of approved positions</i>	<i>4 per year / annual salary \$57,000-63,000 (based on GMT)</i>
<i>Program length</i>	<i>2 years</i>
<i>Type of program</i>	<i>Large academic, fully ACGME-accredited</i>
<i>Funds for books, dues and travel</i>	<i>\$1,750, plus one department sponsored conference</i>

F A C U L T Y

<i>Charleen Chu, MD PhD</i>	<i>PD and Mitochondria</i>	<i>David Lacomis, MD</i>	<i>Neuromuscular Disease</i>
<i>Robert Garman, DVM</i>	<i>Veterinary Neuropathology</i>	<i>Thomas Pearce, MD PhD</i>	<i>Machine Learning & Digital Pathology</i>
<i>Julia Kofler, MD</i>	<i>Microglia and Neurodegeneration</i>	<i>Daniel Marker, MD PhD</i>	<i>Neuroinflammation & Molecular NP</i>
<i>Scott Kulich, MD</i>	<i>Oxidative Neurotoxins & PD</i>	<i>Clayton Wiley, MD PhD</i>	<i>Imaging & Viral Encephalitis</i>
<i>Additional faculty lists available at path.upmc.edu</i>			

S C H E D U L E S

C O N T A C T S

Year 1

<i>Neuropathology Surgicals / Intraoperatives</i>	<i>22 weeks</i>
<i>Neuromuscular, Neuro-ophthalmologic, Neurodegenerative</i>	<i>21 weeks</i>
<i>Elective</i>	<i>4 weeks</i>
<i>Vacation</i>	<i>4 weeks</i>
<i>Conference Time</i>	<i>1 week</i>

Dr. Julia Kofler
Fellowship Program Director

Dr. Marie DeFrances
Director, Pathology Residency & Fellowship Director

Mrs. Karen Weber 412-624-7897
Program Coordinator weberkm@upmc.edu

Year 2

<i>Neuropathology Surgicals / Intraoperatives</i>	<i>13 weeks</i>
<i>Neuromuscular, Neuro-ophthalmologic, Neurodegenerative</i>	<i>11 weeks</i>
<i>Elective</i>	<i>23 weeks</i>
<i>Vacation</i>	<i>4 weeks</i>
<i>Conference Time</i>	<i>1 week</i>

O N L I N E

UPMC Pathology Home
path.upmc.edu

UPMC Neuropathology Fellowship Information
neuro.pathology.pitt.edu/webstuff/HowtoApply.htm

UPMC Residency Home
residents.pathology.pitt.edu

O N L I N E A P P L I C A T I O N F O R M

<https://secure.opi.upmc.edu/path/fellowship/app-form.cfm>