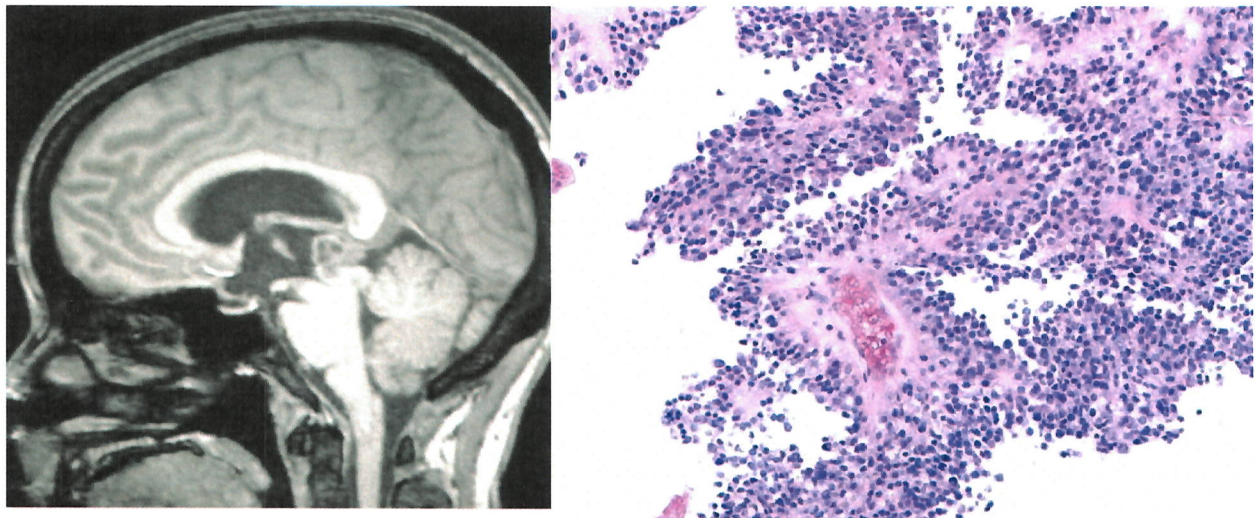


**Eastern Ophthalmic Pathology Society
Annual Meeting 2018
September 13 – September 15**

Fausto J. Rodriguez MD.
Department of Pathology
Johns Hopkins Hospital
Sheikh Zayed Tower, Room M2101
1800 Orleans Street
Baltimore, MD 21231
Email – frodrig4@jhmi.edu

44 year-old woman with headaches, anisocoria and a pineal region mass

Clinical History: The patient presented with a past medical history of hypothyroidism and worsening headaches. More recently she was noticed to have unequal pupils, right>left by 1-2 mm. Ophthalmologic examination also demonstrated grade I papilledema OU. CT followed by MRI demonstrated an heterogeneously enhancing solid and cystic 1.8x1.7x1.5 cm mass in the pineal region with mass effect in the tectal plate and ventriculomegaly. She underwent third ventriculostomy with resection of the mass.



Material provided: virtual H&E slide available in the following link:
<https://digital.pathology.johnshopkins.edu/repos/919>

The complete handout will be provided at the meeting.