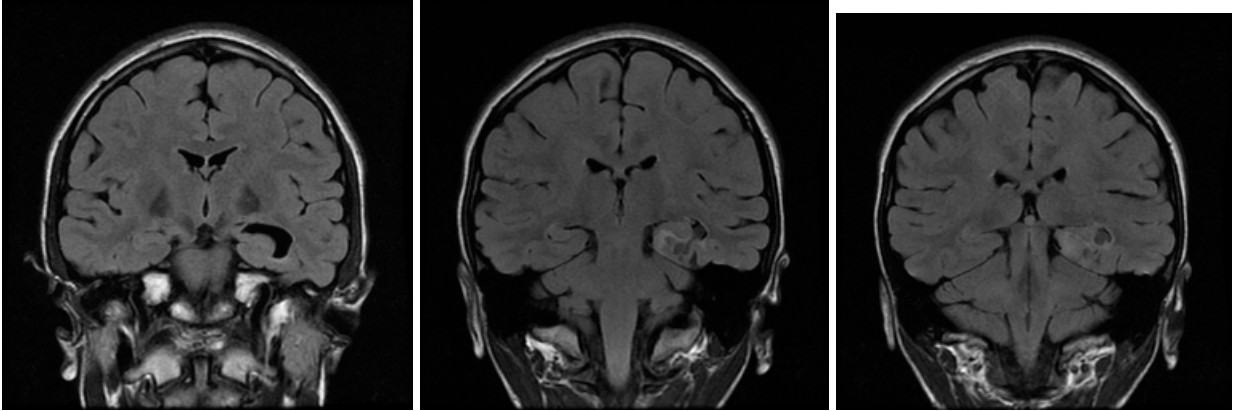
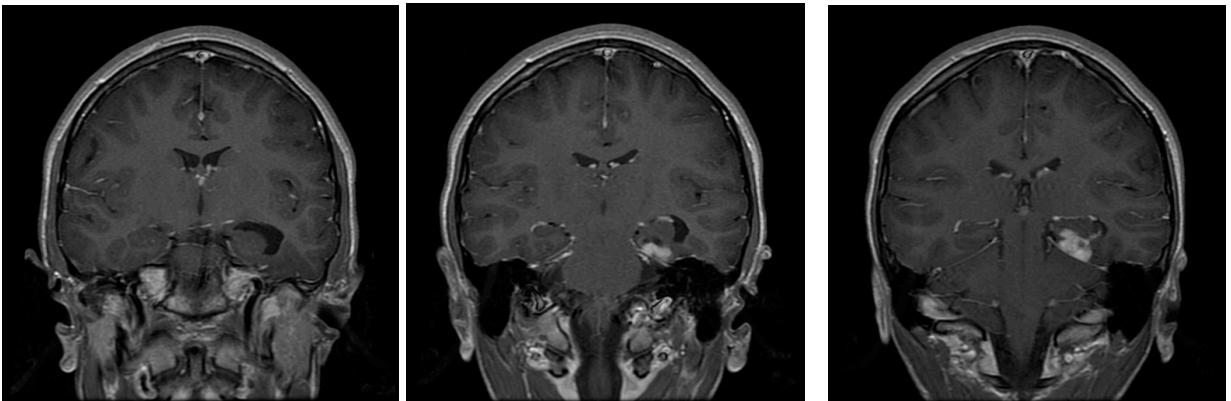


16 y/o female with 6 months of partial complex seizures never fully controlled by anti-epileptic meds. MRI showed following lesion

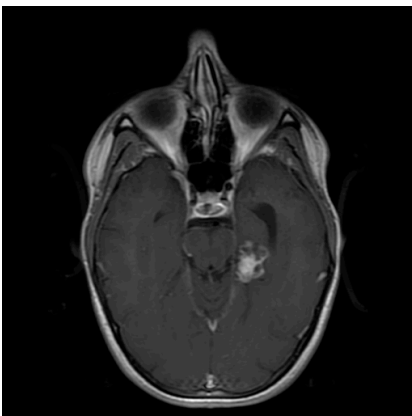
FLAIR



T1+C



Axial +C



T2 Propeller



Describe the lesion. What is the clinical/radiologic differential?

What is the H&E diagnosis?

<http://image.upmc.edu:8080/NeuroPathology/GlialTumors/GlialTumors3/GT.97A.svs/view.apml>