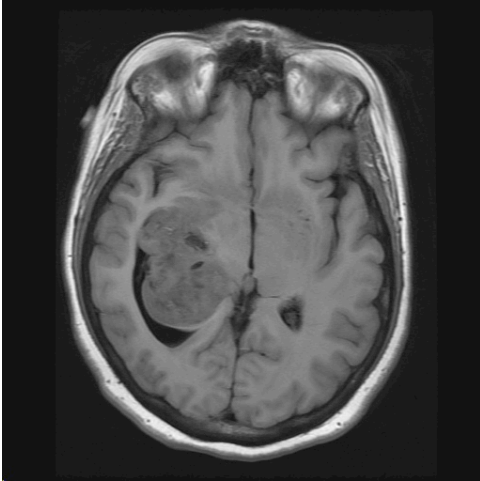


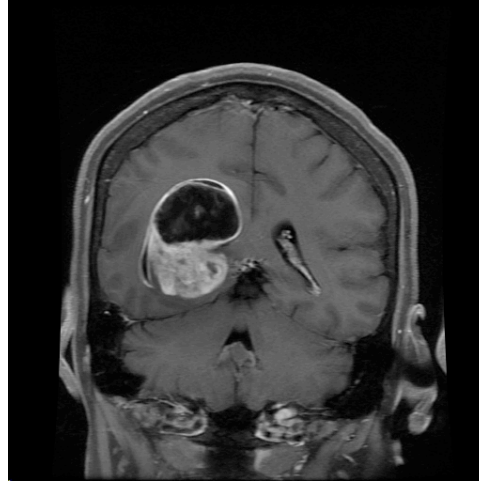
Neuropathology Case

Children's Hospital Conference  
Friday January 13, 2011

T1



T1 + contrast



Patient underwent cyst fenestration and tumor biopsy, which was consistent with pilocytic astrocytoma.

Because of recurrent mass symptoms, she underwent partial tumor resection about 6 weeks later:

H&E  
Synaptophysin  
Ki-67

Diagnosis?

**Perilesional**

**Lesion**